

**LEGEND**

● ELECTRIC POLE	■ STOP VALVE
○ POLE & TRANSFORMER	■ FIRE HYDRANT
▽ ELECTRIC STAY	○ WATER METER
◇ POLE & LIGHT	○ GAS MARKER
○ LIGHT POLE	○ GAS METER
□ COMMS PIT	○ SEWER PIT SQUARE
□ COMMS MARKER POST	○ SEWER MAN HOLE
□ COMMS PILLAR	○ SEWER INSPECTION
○ BOLLARD	○ ACCESS SHAFT UNCLASS
● COMMS POLE	○ SIGN
□ SUBSTATION	□ DRAINAGE PIT
○ GENERATOR	□ ROUND POST
○ ELECTRIC STAY	□ CONC POST
○ ELECTRICITY OVERHEAD	
— ROOF LINE	
— BUILDING WALL	
— EAVE AND GUTTER	
— VERANDAH/BALCONY	
— KERB BACK	
— KERB INVERT	
— KERB LIP	
— 0-3 UNDERGROUND POWERLINES	
— SEWERAGE LINE AND DEPTH	
— STORMWATER DRAINAGE LINE AND DEPTH	
— WATER MAIN AND DEPTH	
— COMMUNICATIONS LINE AND DEPTH	
— 0-3 UNDERGROUND GAS LINE AND DEPTH	
— SEWER APPROX FROM OLD HOSPITAL PROPOSED PLANS	
— UNDERGROUND GAS PLOTTED FROM DBYD	
— UNDERGROUND WATER PLOTTED FROM COUNCIL RECORDS	

▶ P27 - PHOTO AND DIRECTION AND PHOTO NUMBER

DATUM FOR COORDINATES:  
GROUND - APPLY CSF 0.999978 ABOUT 0.0 FOR GRID

UNDERGROUND SERVICES AS DETERMINED BY EICON: 0419 568331  
QUALITY LEVEL B (AS 5488.1:2019)

**SERVICES NOTES:**

- ONLY THOSE SERVICES VISIBLE AT THE TIME OF SURVEY HAVE BEEN LOCATED AND IF SHOWN AS '36.48' ARE QUALITY LEVEL A AS DEFINED BY AS 5488.1:2019. LEVELS SHOWN ARE SURFACE LEVELS UNLESS NOTED OTHERWISE.
- UNDERGROUND SERVICES HAVE BEEN LOCATED FOR POSITION AND DEPTH AND HAVE BEEN DETERMINED FROM USING EICON 25/08/2022. ALL RELEVANT AUTHORITIES MUST BE CONTACTED TO DETERMINE THE FULL EXTENT OF SERVICES PRIOR TO ANY PLANNING OR WORKS NEAR THE SITE.



DENOTES PAINT MARK MEASURED AND DEPTH

GPR methodology in finding services is limited due to materials of construction. PVC and clay are difficult to locate and may need other methods to determine location.  
(As advised by EICON and maintenance)

This plan is prepared for Health Infrastructure from a field survey of the existing physical features of the site for the purpose of designing new constructions on the land and should not be used for any other purpose.

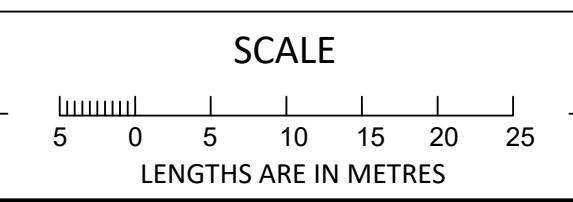
The title boundaries and easements shown hereon are diagrammatic only, boundaries have not been fully investigated and were not marked at the time of survey. The western most boundary is determined by top of river bank.

Prior to any demolition, excavation or construction on the site, the relevant authority should be contacted for possible location of further underground services and detailed location of all services.  
This note is an integral part of this plan.

**IMPORTANT NOTE REGARDING IN-GROUND SERVICES**  
Contained within this plan are assumed lines of in-ground services. Spot locations of services as requested by the client at ground level have been determined using Ground Penetrating Radar Techniques (GPR) by EICON Services Pty Ltd (m: 0419 568331). The assumed lines join the survey positions of the spot locations. Walpole Surveying does not guarantee the location of any in-ground service in this plan. Further in-ground services may exist. The in-ground service location must be proven to the satisfaction of the land owner and responsible authority before any excavation work commences.

**WALPOLE SURVEYING**  
Licensed NSW & Victorian Cadastral and Engineering Surveyors  
465 Smidley Street  
PO Box 3186, Albury, NSW 2640  
p: 02 6021 2233 | f: 02 6021 1411  
info@walpolesurveying.com.au

SURVEYORS REF:  
22145  
VERSION 2  
18/10/2022

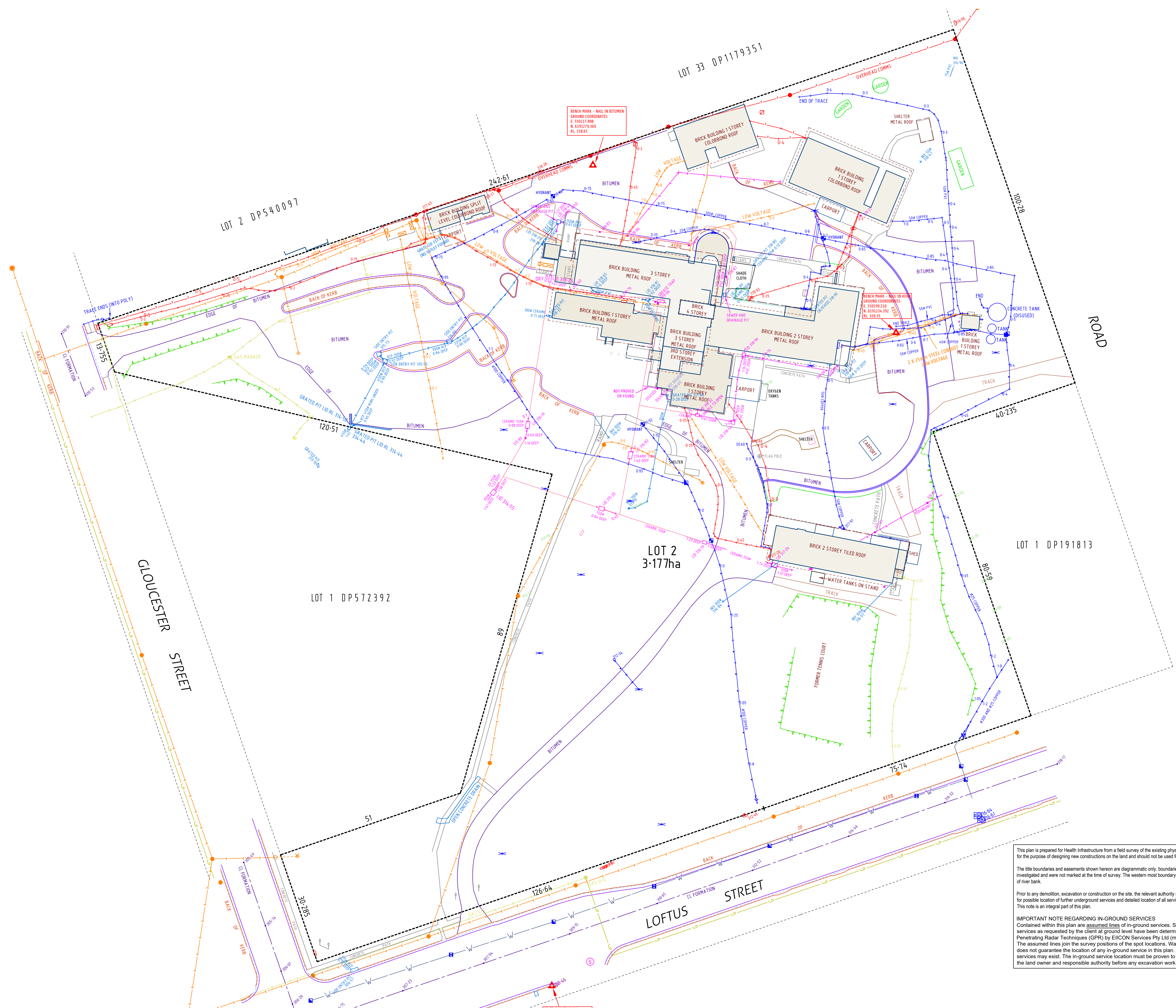


ORIGINAL SCALE SHEET SIZE  
1:500 A1

NOTES  
DATE OF SURVEY: JUNE AND JULY 2018 AND AUGUST 2022  
DATUM FOR COORDINATES: ARBITRARY  
DATUM FOR LEVELS: AHD VIDE 55M100248  
CONTOUR INTERVAL: 0.2m  
TREES SHOWN ARE APPROXIMATELY 10 SCALE

**PLAN OF FEATURES, LEVELS AND SERVICES**  
LOT 2 IN DP572392  
169-189 Loftus Street, Temora  
For Health Infrastructure





**LEGEND**


DATUM FOR COORDINATES:  
GROUND - APPLY CSF 0.999678 ABOUT 0.0 FOR GRID

UNDERGROUND SERVICES AS DETERMINED BY EIICON: 0419 568331  
QUALITY LEVEL B (AS 5488.1:2019)

- SERVICES NOTES:-**
- ONLY THOSE SERVICES VISIBLE AT THE TIME OF SURVEY HAVE BEEN LOCATED AND IF SHOWN AS 'AS' ARE QUALITY LEVEL A AS DEFINED BY AS 5488.1:2019. LEVELS SHOWN ARE SURFACE LEVELS UNLESS NOTED OTHERWISE.
  - UNDERGROUND SERVICES HAVE BEEN LOCATED FOR POSITION AND DEPTH AND HAVE BEEN DETERMINED FROM USING EIICON 25/08/2022. ALL RELEVANT AUTHORITIES MUST BE CONTACTED TO DETERMINE THE FULL EXTENT OF SERVICES PRIOR TO ANY PLANNING OR WORKS NEAR THE SITE.

This plan is prepared for Health Infrastructure from a field survey of the existing physical features of the site for the purpose of designing new constructions on the land and should not be used for any other purpose.

The title boundaries and easements shown hereon are diagrammatic only, boundaries have not been fully investigated and were not marked at the time of survey. The western most boundary is determined by top of river bank.

Prior to any demolition, excavation or construction on the site, the relevant authority should be contacted for possible location of further underground services and detailed location of all services.

This note is an integral part of this plan.

**IMPORTANT NOTE REGARDING IN-GROUND SERVICES**

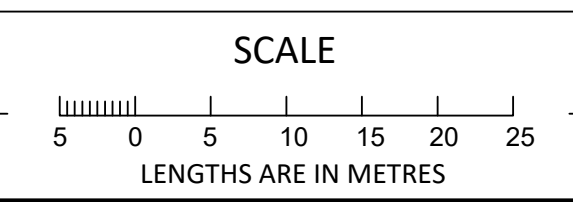
Contained within this plan are assumed lines of in-ground services. Spot locations of services as requested by the client at ground level have been determined using Ground Penetrating Radar Techniques (GPR) by EIICON Services Pty Ltd (m: 0419 568331). The assumed lines join the survey positions of the spot locations. Walpole Surveying does not guarantee the location of any in-ground service in this plan. Further in-ground services may exist. The in-ground service location must be proven to the satisfaction of the land owner and responsible authority before any excavation work commences.

DENOTES PAINT MARK MEASURED AND DEPTH

GPR methodology in finding services is limited due to materials of construction. PVC and clay are difficult to locate and may need other methods to determine location.  
(As advised by EIICON and maintenance)

**WALPOLE SURVEYING**  
Licensed NSW & Victorian Cadastral and Engineering Surveyors  
465 Smidwell Street  
PO Box 3186, Albury, NSW 2640  
p. 02 6021 2233 | f. 02 6021 1411  
info@walpolesurveying.com.au

SURVEYORS REF:  
22145  
VERSION 1  
15/09/2022



ORIGINAL SCALE  
1:500

**NOTES**  
DATE OF SURVEY: JUNE AND JULY 2018 AND AUGUST 2022  
DATUM FOR COORDINATES: ARBITRARY  
DATUM FOR LEVELS: AHD VIDE 55M100248

**PLAN OF FEATURES, LEVELS AND SERVICES**  
LOT 2 IN DP572392  
169-189 Loftus Street, Temora  
For Health Infrastructure