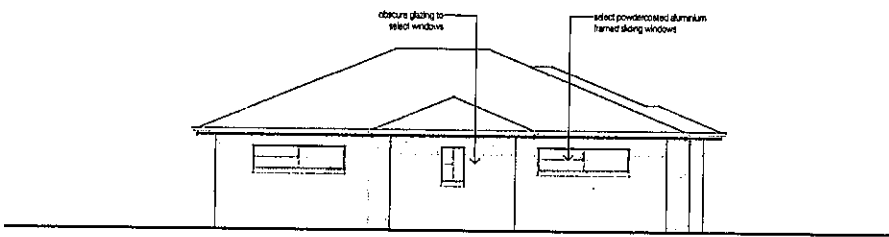
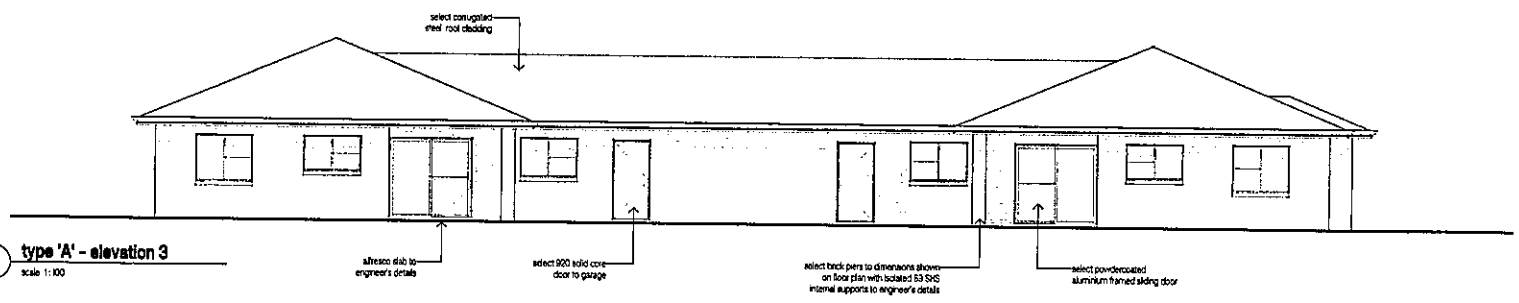


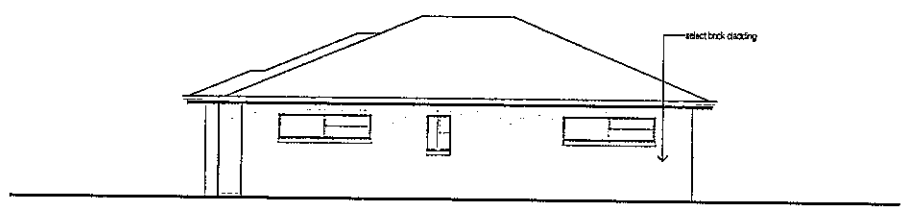
type 'A' - elevation 1  
scale 1:100



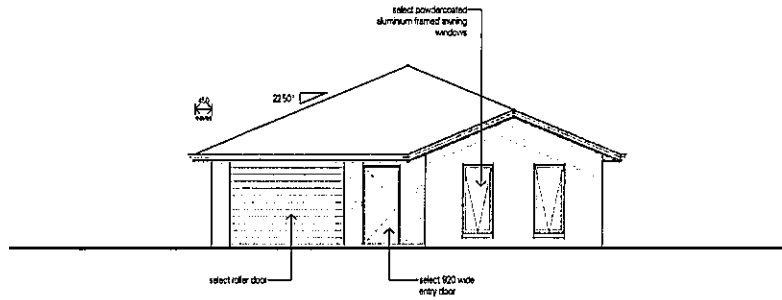
type 'A' - elevation 2  
scale 1:100



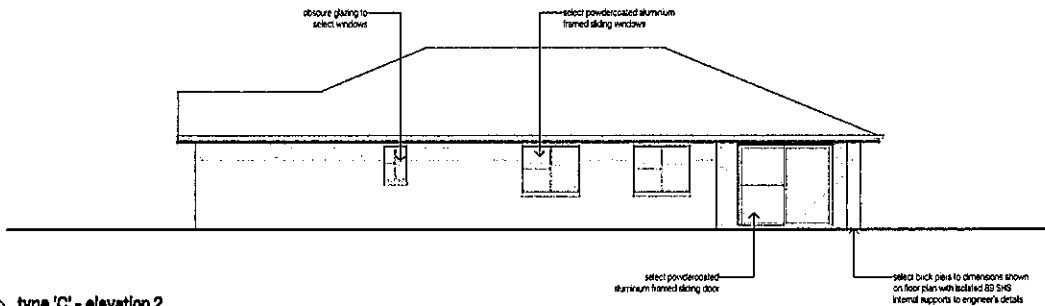
type 'A' - elevation 3  
scale 1:100



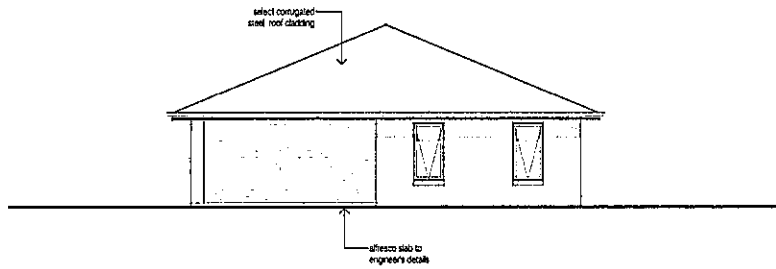
type 'A' - elevation 4  
scale 1:100



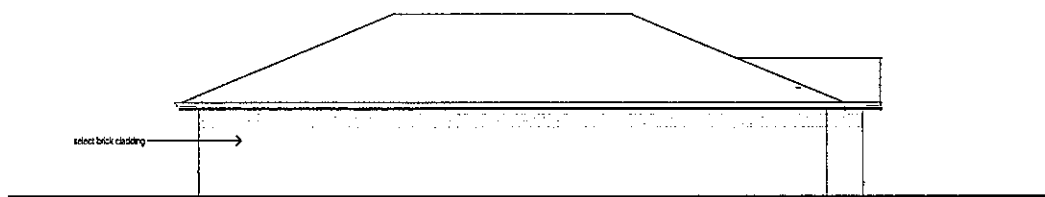
○ type 'C' - elevation 1  
scale 1:100



○ type 'C' - elevation 2  
scale 1:100



○ type 'C' - elevation 3  
scale 1:100



○ type 'C' - elevation 4  
scale 1:100